

Accommodation Checklist

Please ensure you have completed the following before departing accommodation:

- Empty fridge
- Make sure shared areas are clean and dishes are washed.
- Place all rubbish into garbage bin outside – recycle appropriately (Bins on curb on a Tuesday)
- Please turn off air conditioning and/or heating
- Taps on washing machine are turned off
- Make sure you take all belongings with you!
- Please vacate your room by 9:00am
- Please drop keys and name tag off at reception



Location



Contact

Phone:

03 5761 4310

03 5761 4222

Email:

education@benallahealth.org.au
accommodation@benallahealth.org.au

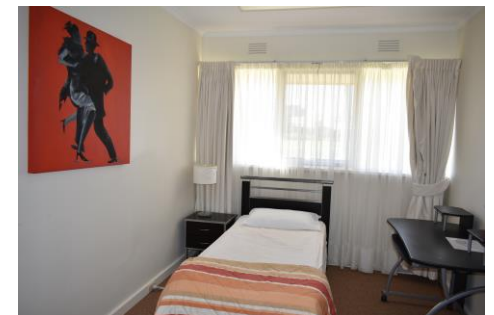
45-53 Coster Street
PO Box 406 Benalla Victoria 3671
www.benallahealth.org.au

Benalla

HEALTH

Student Accommodation

Student Information



Facilities

There are limited number of rooms for students on placement at Benalla Health. Therefore to secure your accommodation please ensure you book early. Most bedrooms have individual keys whilst the kitchen, dining and lounge are shared areas. A vacuum cleaner is located in the linen cupboard for your convenience. An iron and ironing board are kept in the laundry for your use.

Bookings

If you wish to utilise the student accommodation, enquiries and bookings can be made by contacting:
(03) 5761 4222 or
the Education Centre on
(03) 57614 310 during office hours or
via email to:
education@benallahealth.org.au

Cost

Total cost for student is \$82.50 per week including GST. There is also a \$65 refundable cleaning and key bond and a \$10 student swipe card bond. After booking, an account will be raised and sent to you, all accommodation charges and bonds are to be paid in full at main reception of the hospital prior to the receipt of room keys.

Housekeeping

Housekeeping staff clean the accommodation each week. They will only clean shared areas, your bedroom will not be cleaned until you depart. The cleaning of kitchen areas and appliances are tenant responsibility. If a cleaner has to clean for longer than their usual hours due to excessive mess - all tenants in the house will be charged a **\$50.00** cleaning fee for the extra hours that the cleaner is required.

Doors & Windows

Please ensure all doors and windows are locked before leaving the house.

Linen

Linen is NOT provided with accommodation (this includes towels, pillows, doonas and blankets). If you have any questions about bed sizing (varies with different rooms) etc. please contact; education@benallahealth.org.au
In emergency circumstances, a linen pack is available to **hire** for the period of your stay.

Crockery, Cutlery and Utensils

All are provided. Please clean and replace in cupboards. Please notify of any breakages to enable replacements to be purchased



Rubbish Collection

Please ensure the outside wheelie bins are placed on the curb on a Tuesday and returned once they have been collected. Please recycle properly.

Air-Conditioner/Heater

Central air-conditioner and heater are located on wall in hall way. Please *Turn Off* before leaving the house.

Internet Access

The house is fitted with wireless internet and there is a limit on downloads. Please bring your own laptop / iPad etc.

Keys

Check in for accommodation is. Mon – Fri 08:30 – 16:30. We DO NOT have the capacity to issue keys outside office hours. Most bedrooms have an individual key. We suggest you lock your bedroom when you are not in the house.

Car Parking

A car park is located on the hospital grounds - at the rear of house, alternatively there is on street parking and under the carport.

Meals

Lunch and dinner may be ordered through the hospitals staff meals system. Please see Reception to obtain a meal voucher, orders must be in by 9:45am for lunch and 3:00pm for dinner. Your meal will be placed in the staff cafeteria fridge. The cost for a small meal is \$4.50 or \$7.00 for a main.



Maintenance

If repairs are needed or items need replacing, please inform the Education Centre during business hours.